



AQUADEA®

Naturally invigorating.

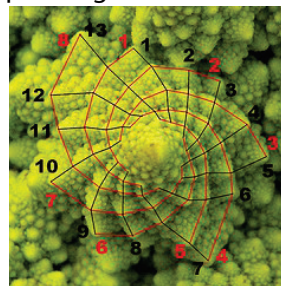
THE AQUADEA CRYSTAL AND VORTEX

This information most likely comes to you today because you have already been informed about our innovative products in the area of water vitalization. These products incorporate the ingenious vortex technology. It was our mission to build upon and further the fundamentals established by Viktor Schauberger regarding water vortices. We are more than happy to say that our actual vortex technology including its vortex cells is one of a kind! Furthermore it is a pleasure for us to discover that you have become interested in creating your life in a more conscious manner. In some respect this is almost inevitable. When this happens it becomes a natural that you then begin to inform yourself about our **commonly shared fundamental element in life "water"**.



In following many other well known mystics, healers, physicists or even entire cultures – whether Aztecs or Egyptians – we also started

off onto our own search for answers. One of the questions which captured our interest was: When and why do we experience things as: well integrated, harmonious, beautiful and pleasing?



It is the principle residing within the **Golden Ratio** where we discover the significant relationship between consonance and coherency of parts, as well as their totality

and how this relates to harmony. Those objects, such as a house or a table, which are produced in accordance to the Golden Ratio, allow the observer precisely this very harmonious experience referenced in our question.

The Golden Ratio is the foundation upon which our vortex cells are based.

A further innovative characteristic pertinent to the construction of the vortex cells is the **Fibonacci Sequence** which gives rise to the Golden Spiral. Both Leonardo Fibonacci and Viktor Schauberger were observers of Nature. Fibonacci was the first to discover that nature followed a simple mathematical principle. This was true for

every plant as well as many organisms, as was discovered e.g. in a snail's house. The growth of this house followed congruently a specific numerical sequence: 1, 1, 2, 3, 5, 8, 13, 21, 34, 55, 89, 144, 233, and so on. This means that every following Prime Number was the sum of the addition of the last two numbers.



This is well illustrated when we examine the growth of a flower: **A flower first develops a deviation.** This then divides itself into two and then into three and after that into five and so on. This continues until the entire picture of a beautiful plant according to its matrix is achieved. The numerical sequence is, as we have seen, in accordance to the geometrical relationship contained within the **Golden Ratio**. When one connects the numerical values of the Fibonacci Sequence with the rectangle of the Golden Ratio the Fibonacci-Spiral results.

This is the predominant influence for the natural vorticity of our AQUADEA Water. We have integrated the entire body of knowledge regarding the harmonizing effect of the Golden Ratio and the positive nature of the Golden Spiral into a practical application which is integral to the construction of our vortex cells. In the production of our vortex cells we have calibrated them precisely to 1/100 mm in order to uphold this geometry.

THE DEVELOPMENT OF THE INITIAL VORTEX CELLS

Our present day vortex cells are based upon the fundamental knowledge which references back to **Viktor Schaubberger, an austrian pioneer in water technology.** It was already around 1930, in his first vortex producing device for water, where we discovered evidence of this knowledge in application. Viktor Schaubberger drew his insights from his observations of nature. Based thereon he was able to create vortices at that time which functioned, not upon the principle of pressure, but rather upon that of suction; in other words, based upon small implosions.

Here too he discovered that **the speed of the water, induced by the vortices, played a significant role in the development of force fields and the expansion of energy.** In the initial

work of Viktor Schaubberger we see evidence of a more moderate speed which was induced by the vortices used during that era.

Within the last thirty years the oscillatory patterns of the earth seem to have undergone a drastic change and this worldwide. Comparative vortex cells which were produced in the 1990s now reveal that when we channel water through one of those threefold vortices, it is, both biologically as well as physically, more easily tolerated nowadays. That means that during their initial introduction people had stronger reactions to their implementation. This, of course, could also indicate that modern day man requires a water quality, which affords body and soul a stronger, more intense support in recreating harmony and order within its system.

This could equally be indicative of the increased and general stress level for most people today, as compared to 20 years ago. It also alludes to the fact that tolerance levels and the capacity to perceive and process information have greatly increased amongst those interested in AQUADEA. It is therefore conceivable, that our modern day AQUADEA crystal-vortex-cell would not have suited the needs of the generation during the 1940s era of Viktor Schaubberger.

By virtue of the fact that the new crystal-vortex-cells have a higher and more intense capacity to structure and center quantum space, the user finds it easier to attain and maintain his centeredness, regardless of internal and external influences.



Very precise Nano Cells in the unique combination of crystals and precious metals were brought forth under the auspices of **Werner Habermeier** and his continuous research and development!

The knowledge and realizations of Viktor Schaubberger contributed to supplying a foundation for the development of the vortex technique. Another integral basic to this foundation can be seen in the sacred geometry of the "Flower of Life". This basic form or archetype seems to reflect the basic structure of the universe.

A fundamental statement of Viktor Schauberger was: **"You are turning incorrectly..."** It's about **implosion, that is to say about** "a force which is directed inwardly" and not an explosion which is directed outwardly and also diffuses.



Water pressure becomes suction:

A plastic lid is held under the shower head.



The plastic lid is pulled up through the suction and the vortex activity.



Through the suction the plastic lid is held and turned.

Reference:
Viktor Schauberger

All that we don't know about water still awaits our discovery. Schauberger had postulated certain bioenergetic, essential metals as well as the practical implementation of implosions. AQUADEA has consistently contributed to the development of this knowledge by increasing the speed at which the water is moved through the vortices and by the utilisation of crystals!

AQUADEA VORTEX CELLS: A DYNAMIC EFFECT

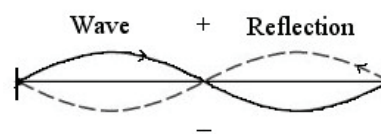
These unique cells amplify and accelerate the water through the vortices. Consequently they act as catalysers. This results in a much higher frequency which invigorates the water.

The significant specification here lies in these vortex cells serving as force fields and this being independent of whether they are in our AQUADEA showers or in the tap water vortices.

OUR PHYSICAL ENVIRONMENT

Meanwhile science has proven that matter is not a solid substance. There are theories about the concept "matter" which state that it is comprised of energy. A very essential aspect of energy is its characteristic as "a force or a power having an inward effect". This means it has the power or potential to move or change something. When two forces of equal power converge, this leads to a point of standstill. This can easily be experienced, e.g. in the area of music. When two opposing vibrational waves, having the exact same characteristics, converge, a standing wave is created. The 'standing wave' continues to vibrate in time but not locally. We have a similar constellation when it applies to the convergence of whirlpools. When two whirlpools merge a very complex 'standing wave' arises.

We can see this in the example of spaces or rooms where argumentation has occurred. One can frequently perceive a tension in the air when initially entering this area. This is also an example of such 'standing waves' which are of more subtle frequencies than tones.



Standing Wave

If one was to create multiple 'standing waves' within a very small space this "spot" or point could then manifest as matter. In other words if you were to walk or run into this spot you would literally bump into it and could even be bruised. If we follow this train of thought even further this leads us to the conclusion that atoms, electrons, quarks etc. are ultimately 'standing waves' containing differentiated and specific characteristics.

In the context of human beings: if one of the most subtle forms of a 'standing wave' is the soul, then the following conclusion brings forth an even further dimension of understanding:

Research in the area of quantum physics amazed scientists, when they discovered that quanta behaved differently when it was observed, than when not observed.

Physicists could only determine the location and impulse of an electron based upon the factor of 'probability' and this is consequently true for all matter. So, it obviously contains characteristics of consciousness.

In our modern day world we frequently run into the saying “the power of creation” or the “power of manifestation”:

We slowly begin to recognize more and more that we are not populating a stable – and consequently unchangeable - material world, but rather we find ourselves within a field of constantly changing dynamic energies and oscillations. Everything around us is comprised of energy fields, ones which we can either perceive intuitively or consciously. As humans, we are capable of influencing, changing and directing these energies via our thoughts and the power of our heart.

Within **the AQUADEA crystal-vortex cells** there is a kind of construction which produces geometrical vortices or whirlpools. These contain certain patterns of frequency with nodal points.

The nodal points contain 'standing waves'.

Through the patterns of frequency the standing waves are brought into motion and some are even dissolved. Disharmonious patterns of frequency have proven to easily give way to a clarifying structuring. This is especially true when the vortex cells are in and of themselves resonating with “the force of Life”; in other words resonating with “survival, function, joy...”

In addition to that, it shouldn't be ignored that the form of the AQUADEA vortex cell corresponds to: the geometrical figure of the



Flower of Life; the Golden Ratio, as well as to the Fibonacci- Sequence. A Torus arises in the center of these cells!

It is by virtue of this very exact geometrical structure that many people experience **a build up of an “energetic field” (a force) whilst showering.** Some of those of you, who are clairvoyant or so-called “sensitives”, can even see this energy field with its play of colours.

THE PHYSICAL WORLD AND THE ZERO-POINT ENERGY

According to the physicist **Nikola Tesla**, who was also an electrical engineer and the discoverer of the Zero point energy, we can assume that this Zero point energy represents a matrix from which matter emerges in a compressed form. One could say that this **Zero point energy represents the original sphere of action of Creation itself.** Every form of energy known to man has its causal beginning here, regardless of whether it is in the form of compressed energy or radiation.



Pict.: The Aquadea vortex cells in the CENTURY Portal

In order to give you an understanding of how the AQUADEA crystal and vortex technology works and thereby affording you an easier utilization of the AQUADEA Tap water vortices and shower heads, it's important for you to know of this **energetic aspect.**

In all of the vortex cells pressure is transformed into suction (Victor Schauburger principle). In order to achieve this, water pressure is required. In most of the cells a pressure measuring two bar is necessary. The nano-cells require a flow-rate of minimum 0,3 liters per minute. Consequently most of the reverse osmosis-systems can be equipped with a tap water vortex swirler.

SWIRLING INTO OXYGENATION

By reason of their structure the vortex cells draw the water, swirling and filling it with air, upwards to the top. Consequently from the very beginning, two primary swirls arise which mutually accelerate each others speed, whilst simultaneously swirling upward into and through an ever narrowing cell space. **At their highest rate of speed they converge at the Zero point.** Here the water clusters are more or less “pulverized” and the

clustered molecules of oxygen are dispersed. The resultant aerated water now contains more free oxygen molecules, which rotate in the form of micro and nano swirls. This in turn enriches the water with further oxygenation.

A simple analogy, to help you visualize this process, could be to imagine having a ball and out of this one ball many small balls would arise. The available surface, i.e. the bonding capacity of the oxygen in the many smaller balls, is radically increased and energized.

SPATIAL SYMPHONIES

In our new crystal vortex chambers that very point, where the two primary swirls converge and undergo the Zero point, is made out of pure natural crystal. At that point of the highest speed, coupled with the least amount of expansion, the swirling vortex impacts the crystal and instigates its vibration. This undulation exponentiates the energetic force of the crystal and the crystal's structure is transferred into the water. It is here that a coherency simultaneously arises within the geometry, the water, the crystal, the metal and the environment. This "field of energy" expands into the environment. The non-coherent structures within the surrounding space begin to dissipate – a healing sets in. The longer this water can flow through the cellular vortices without disruption, the more coherency will arise in that space. Coherency in the context of laser light means bundled, concentrated, energetic and shows a consonance amongst the photons.

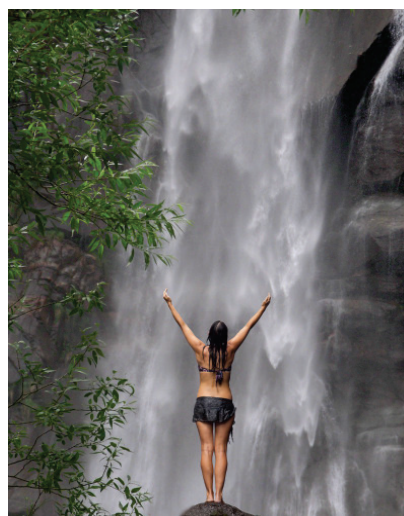
The Golden Ratio and the **sacred geometry** show a coherency with the basic structure of the universe and with matter itself. Coherency could also be described as the dissolution of separation or as proximity and consonance.



Within a psychological context, it could be described as the increased ability of man's awareness to mentally and emotionally penetrate things. When one can do this, then one feels more connected; the things appear to be more orderly and a feeling of being able to act returns. **Werner Habermeier describes this coherency**, which arises around and through the vortices, as "being attuned to life and its areas

of expression". When one comes into proximity with a strong coherency to life, this resonates deep within the seeds of knowledge inherent in each individual. The soul is then fortified. It can more easily penetrate the inner chaos and express itself outwardly, thereby arriving into the NOW. Coherency with life is life-giving. This can be experienced when we are in a pristine area of nature or in the presence of a waterfall.

The longer water flows through a crystal-vortex cell, the more extensive the field of energy and the more coherent life within this space becomes. The sound and therefore the vibration of this shower is also transferred into that space!



Can you imagine the extent of the unfolding potential of higher order which will occur within this space? **Frequently customers tell us that they utilize this space as a booster for:**
a) creating new structures, b) detoxing the body, c) meditating, d) visionary work or e) just letting go on different levels.

The expanding field of energy arising out of the vortex cells feels as if it is influenced by the respective environment. Factors, such as: the order and denseness of the relevant space, the vibration of the objects there, as well as the number, mindset and condition of the people therein, play a significant role. The more dulled down this environment is, the slower the field of energy seems to expand. Theoretically the oscillation of the crystals would expand immediately. However, when the environment contains an element of chaos, it seems more difficult to perceive this oscillatory expansion or to perceive the arising coherency. When the AQUADEA LifeSource Vortex

or the LifePower Shower Vortex is turned off, it seems as if the original condition within the room returns. Despite appearances, a residual change within this space can verily be detected. Gradients of effortlessness and joy can begin to manifest.

By the way, the basic frequency of vibration of the vortex cells is congruent with the following factors:

- with the highest frequency of the heart chakra
- with many Overtones
- with the required frequency for the reparation of DNA
- with the frequencies for miracles
- with the frequencies for connecting with the spiritual world
- with the frequencies for transformation



This is the frequency around **528 hertz as well as the color green**. Vortices contain many other frequencies, ranging from the bass wave up to the ever more spiritualised areas.

Due to the fact that within the water conduits there is no absolute constant pressure, no mechanical and static frequency can establish itself there! Life is also non-static. It has even been documented to show that the greater the variability of a person's heart rate (ECG), the more vital and open this person will appear to be. On the other hand, people, who have chronic or serious illnesses, have a heart rate like a metronome. It is non-varying.

When the vortex cells, multiple cells, are arranged in an interconnected manner, an even higher and more interesting variability in the pattern of frequency arises.

(ref.: **Solfeggio Frequencies**)

OUR BODY ALSO BENEFITS FROM THE SWIRLED AQUADEA WATER!

Apart from the defined effects of the AQUADEA vortex cells we have a very important factor and that is the water itself! Do you know the difference

in bodies of water? Just imagine standing on the shore of a leveled canal. The water boringly moves along and dully makes its way along its limitations. How does that feel? Wouldn't you rather stand next to an invigorating mountain stream; one which brings fresh and flowing water through its twists, cragginess and different courses! Here you can feel life pulsating! This is a place where one would like to stay! Here it is difficult not to feel good nor happy! **This is an aspect which water, i.e. nature has: The swirling causes water to revitalise!** This invigoration can easily be experienced through the swirling which transpires in our AQUADEA vortex cells.

"I feel much lighter after such a shower!"

"My skin feels like silk."

"Since we've been using the swirling vortex for our tap water, even our child likes to drink water."

Those are just some of the statements from our customers, who have used either the tap water vortex swirler or the AQUADEA shower head. A decisive factor is that a changed quality in the water is perceptible! It is softer, clearer and has more flavour!

Either through drinking, showering or bathing in this water we can affect and manifest a long term improvement in our well being and accumulate more life affirming energy!



The reason that our body cells sometimes show initial reactions, to the vorticity of this water, has to do with the body's adaptation to a higher orderliness in its structure.

We are presently working on documenting the different processes within the body system.

You are invited to share with us: your experiences, investigative results or realizations regarding the AQUADEA water!